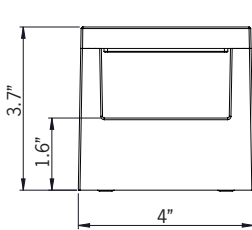
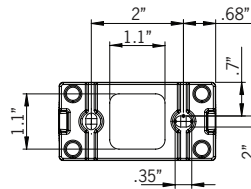
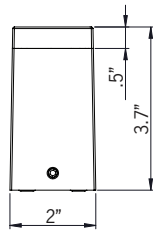


**For Installation of Augusta 1 Wall Light LED.
Model. AUG-30001**

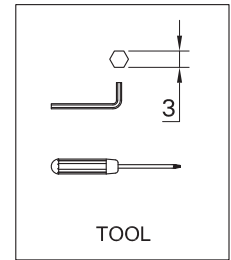
Product drawing (dimensions) CE IP65 IK08 CLASS I



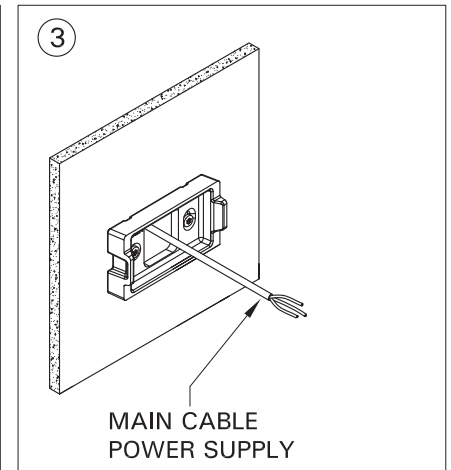
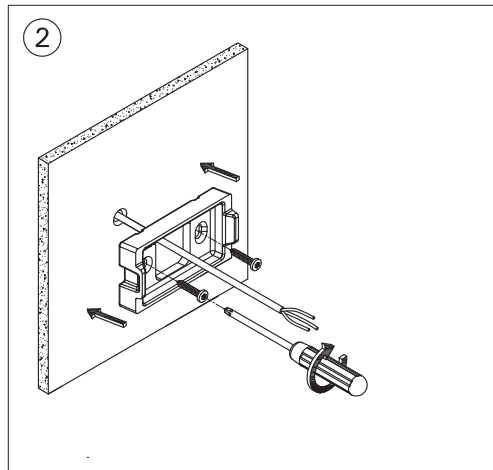
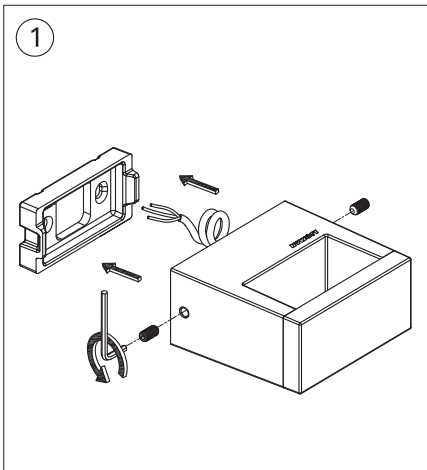
AUG-30001



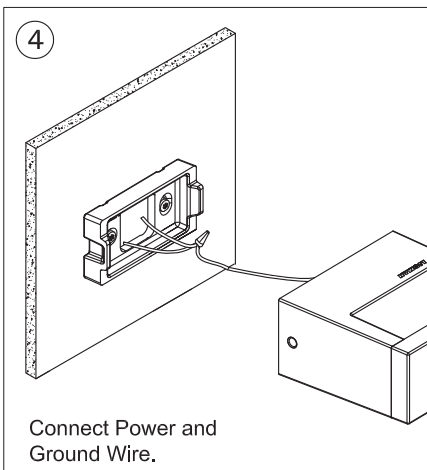
MOUNTING DETAIL



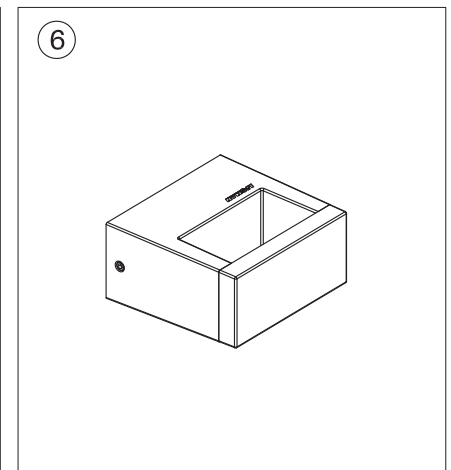
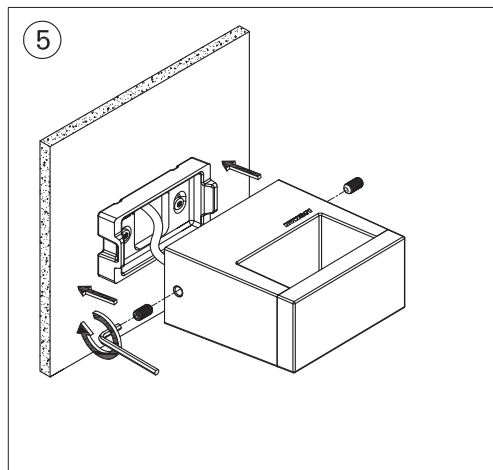
TOOL



MAIN CABLE
POWER SUPPLY



Connect Power and
Ground Wire.



Notice to installer :

- 1.WIRING INSTRUCTIONS Warning : RISK OF FIRE AND ELECTRICAL SHOCK. : FIXTURE MUST BE INSTALLED BY A QUALIFIED ELECTRICIAN ONLY>FIXTURE IS INTENDED FOR INSTALLATION IN ACCORDANCE WITH THE NATIONAL ELECTRICAL CODE, LOCAL AND FEDERAL CODE SPECIFICATIONS. DISCONNECT POWER BEFORE SERVICING.**
- 2.This fixture has a VOLTAGE SPECIFIC BALLAST,Check that the supply voltage is the same as the installed ballast voltage.**

Ligman Lighting USA

7144 NW Progress Court, Hillsboro
Oregon, 97124, USA
Tel : 503 645 0500 | Fax : 503 645 8100

www.ligmanlightingusa.com



FM-TS-13/25-05-2007-REV.2